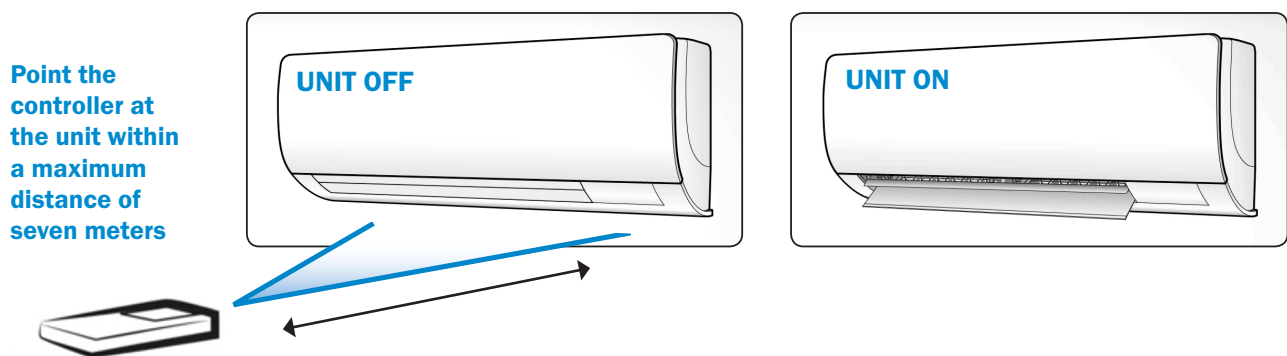


Using your new Heat Pump

Signal Transmitter

To use the remote controller, aim the transmitter at the indoor unit. If there is anything blocking the signals between the unit and the remote controller, such as a curtain, the unit may not operate. The maximum transmission distance is about 7m.



Turning the Heat Pump unit on

1. **COOL** **HEAT**

To turn the unit On - Push **HEAT** button (winter)
COOL button (summer)

2. **TEMP**

TEMPERATURE - Set Up/down as required
(recommended range 16-20 degrees)

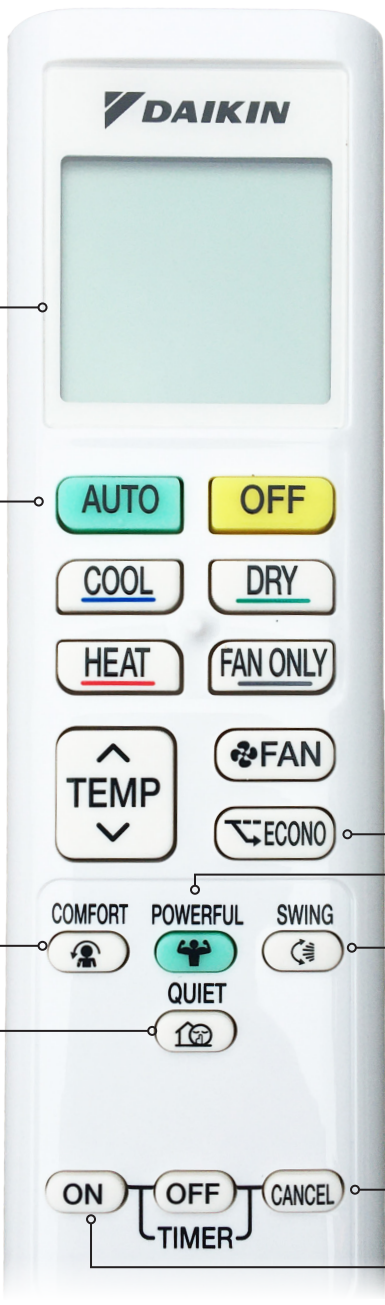
3. **FAN**

FAN SPEED - Set on auto

4. **OFF**

Press the **OFF** button when you are finished using the unit

Heat Pump button functions



DISPLAY (LCD)
Displays the current settings. (In this illustration, each section is shown with its displays off for the purpose of explanation)

AUTO
AUTO BUTTON
Automatically selects an appropriate operation mode (COOL or HEAT) based on the temperature

COMFORT BUTTON
Changes airflow for comfort

QUIET BUTTON
Outdoor unit quiet operation

ECONO BUTTON
Economy operation

POWERFUL BUTTON
Maximises heating or cooling

SWING BUTTON
Adjusts the airflow direction

Timer:
The time can be set simultaneously to be switched on and off after specific hours (up to 12 hours).

ON **OFF**
Count Up-Down On/Off Timer

CANCEL
Cancels On/Off timer

Changing the batteries





1.
Slide the back cover to take it off.



2.
Set two dry batteries AAA.LR03 (alkaline)



3.
Set the back cover as before

NOTE: Make sure you Position  and  correctly!